

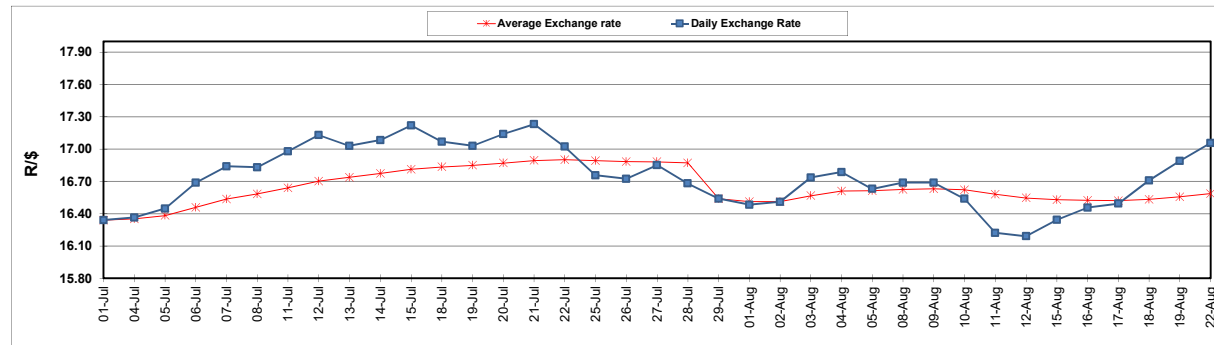
	PETROL 95 ULP	PETROL 93 ULP & LRP	DIESEL 0.05%	DIESEL 0.005%	ILL. PAR.
GAUTENG PUMP PRICE (SA c/l) AS FROM 03/08/2022	2,542.000	2,499.000	-	-	-
WHOLESALE PRICE (SA c/l) AS FROM 03/08/2022	-	-	2,452.440	2,461.840	1,842.288
SINGLE NATIONAL MAXIMUM RETAIL PRICE	-	-	-	-	2,431.000
BASIC FUEL PRICE - 22/08/2022 (SA c/l)	1,311.702	1,280.954	1,643.233	1,668.401	1,644.712
PRESS RELEASE CONTRIBUTION TO BFP 03/008/2022 - 22/08/2022 (SA c/l)	1,482.410	1,439.410	1,600.630	1,610.030	1,624.128
UNIT OVER/(UNDER) RECOVERY - 22/08/2022 (SA c/l)	170.708	158.456	(42.603)	(58.371)	(20.584)
AVERAGE BASIC FUEL PRICE 29/07/2022 - 22/08/2022	1,278.893	1,251.232	1,458.611	1,477.196	1,498.222
AVERAGE UNIT OVER/(UNDER) RECOVERY 29/07/2022 - 22/08/2022	240.046	224.707	170.784	162.128	151.318

### ANALYSIS MOVEMENT OF AVERAGE OVER/(UNDER) RECOVERY

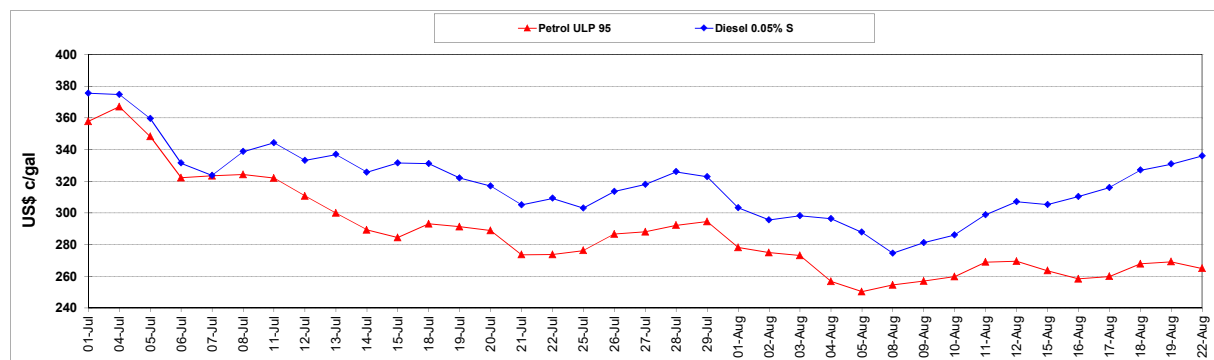
	PETROL 95	PETROL 93	DIESEL 0.05%	DIESEL 0.005%	ILL. PAR.
- MOVEMENT IN INTERNATIONAL PRODUCT PRICES	217.954	203.093	145.588	136.611	125.437
- MOVEMENT IN EXCHANGE RATE	22.092	21.614	25.196	25.517	25.881
AVERAGE UNIT OVER/(UNDER) RECOVERY 29/07/2022 - 22/08/2022	240.046	224.707	170.784	162.128	151.318

### R/\$ EXCHANGE RATE - (R/\$17.0565 - 22/08/2022)

#### EXCHANGE RATE USED IN BASIC FUEL PRICE



#### INTERNATIONAL PRODUCT PRICES OF BASKET USED IN BASIC FUEL PRICE



#### BASIC FUEL PRICE IN SA CENTS PER LITRE

